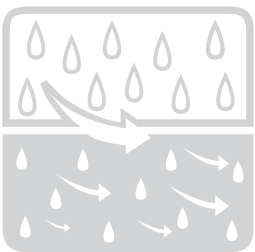
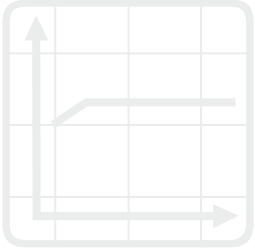




**KATHON® WT**

**WATER TREATMENT MICROBICIDE**



# **Contents**

Introduction

1 - Performance

2 - Chemical and physical properties

3 - Stability/compatibility

4 - Antimicrobial properties

5 - Comparative efficacy

6 - Application areas

7 - Toxicology and environmental fate

8 - Current regulatory status

9 - References

# KATHON® WT : water treatment microbicide

KATHON® WT\*, WTE and WTA microbicides are high performance, broad spectrum, antimicrobial agents based on the proven isothiazolone chemistry of Rohm and Haas Company.

They are effective at very low concentrations in controlling both the planktonic and surface growth of bacteria, fungi and algae and have been produced specifically for water treatment and paper mill applications.

Rohm and Haas Company have developed an unrivalled package of regulatory approvals and environmental fate,

toxicology, and performance data to support the use of KATHON® WT in water treatment applications.

For some years, Rohm and Haas Company have manufactured KATHON® WT at facilities approved according to the internationally recognised Quality Standard ISO 9002 (equivalent to BS5750 Part 2). This reflects the commitment of Rohm and Haas to supply high quality products for its customers.

This technical bulletin provides efficacy, toxicology and environmental fate data to allow the safe and effective use of KATHON® WT.

*\* Unless otherwise specified "KATHON® WT" is used to denote the KATHON® WT group of biocides, which includes KATHON® WT, WTE and WTA.*

## 1 - Performance

### ● KATHON® WT microbicides offer numerous outstanding advantages :

#### **Rapid inhibition of growth and macromolecular synthesis :**

KATHON® WT causes immediate inhibition of growth on coming in contact with a microorganism. The growth inhibition rapidly becomes irreversible and results in cell death. Even before death occurs, the KATHON®-treated organism is unable to synthesize degradative enzymes or the exopolymers which facilitate adhesion and biofilm formation.

#### **Broad spectrum activity :**

KATHON® WT controls the wide variety of algae, bacteria and fungi found in industrial water systems. Such a broad spectrum product reduces

inventory and handling costs, lowers operator training expenses and lessens the risk of dosing error.

#### **Effective at low concentrations :**

Effective control of such a wide variety of microorganisms at levels as low as 1 ppm active ingredient by KATHON® WT, provides an unrivalled and cost-effective treatment.

#### **Effective against biofilm :**

KATHON® WT readily penetrates the surface of adhering biofilm to give effective control of sessile microorganisms.

#### **Biodegradable/non-persistent in the environment :**

When diluted below use concentrations, KATHON® WT, WTA and WTE are readily biodegradable. Their decomposition does not lead to the presence of chlorinated organics in the environment.

#### **Effective over a wide pH range :**

KATHON® WT microbicide exhibits excellent performance over a broad pH range, even in alkaline water systems.

#### **Water soluble :**

KATHON® WT is easily incorporated into formulations.

#### **Compatibility :**

KATHON® WT is compatible with chlorine, corrosion and scale inhibitors and most anionic, cationic and non-ionic formulations at normal use levels.

#### **Non-surface active :**

KATHON® WT is non-foaming.

#### **Infrequent dosing :**

KATHON® WT remains active for long periods of time in the water system, resulting in low service costs.

#### **Easily deactivated :**

Spills of the concentrated active components of KATHON® WT are readily deactivated to non-toxic substances by the addition of a slightly acidic solution of sodium metabisulphite or sodium bisulphite.

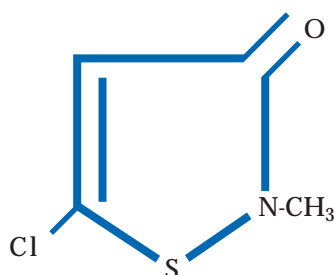
#### **Low toxicity :**

Extensive toxicological testing has shown KATHON® microbicides to be of low toxicity at recommended use levels. Continued testing ensures that potential risks are well defined.

## 2 - Chemical and physical properties

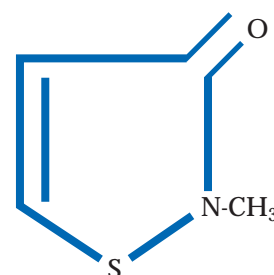
● The active ingredient of KATHON® WT biocides is a mixture of two isothiazolones identified by the IUPAC system of nomenclature as :

5-chloro-2-methyl-4-isothiazolin-3-one



CAS Registry N° 26172-55-4

2-methyl-4-isothiazolin-3-one



CAS Registry N° 2682-20-4

The chemical composition, physical and chemical properties of KATHON® WT, KATHON® WTA and KATHON® WTE microbicides are shown in Table 1.

Table 1 - Composition and properties of KATHON® WT microbicides (these values do not constitute specifications)

	KATHON® WT	KATHON® WTA	KATHON® WTE
<ul style="list-style-type: none"> <li>■ 5-chloro-2 methyl-4-isothiazolin-3-one</li> <li>■ 2-methyl-4-isothiazolin-3-one</li> </ul> Typical value active ingredients	13.9%	1.5%	1.5%
Inert Ingredients	28.0%	3.0%	3.0%
Water	to 100%	to 100%	to 100%
Typical properties			
Appearance	<i>Clear to slightly hazy liquid</i>		
Colour	Amber-gold	Pale yellow	Pale yellow green
Odour	Mild	Mild	Mild
Specific gravity (20°C)	1.32	1.02	1.02
pH (as supplied)	2-4	3-5	3-5
Viscosity (cps) 15°C	19.0	19.0	19.0
25°C	16.0	16.0	19.0
35°C	14.5	14.5	19.0

### 3 - Stability/ compatibility

● **KATHON® is stable over the wide range of conditions found in cooling water and paper mill applications.**

**Product as supplied :**  
KATHON® WT and WTE microbicides are stable as supplied for at least a year at ambient temperatures and for 6 months at 50°C. We recommend, however, that KATHON® WTA is stored at 25°C or below for a maximum period of 6 months. Generally, storage conditions appropriate for industrial chemicals should be employed, avoiding exposure to extremes of temperature.

**At use levels :**

The performance of biocides in industrial water systems is dependent on their stability. Several factors can influence the rate of degradation including water hardness, pH and temperature. The stability of KATHON® WT is actually enhanced in hard water conditions. At normal use levels in water treatment systems, KATHON® WT biocides are biologically and physically compatible with :

- anionic, cationic and non-ionic surfactants
- corrosion and scale inhibitors
- chlorine (Table 2)
- majority of standard paper mill additives.

Figure 1 shows the excellent stability of KATHON® WT compared with competitive biocides at different levels of pH, temperature and total water hardness. This is dealt with in greater detail in the section on stability/compatibility.

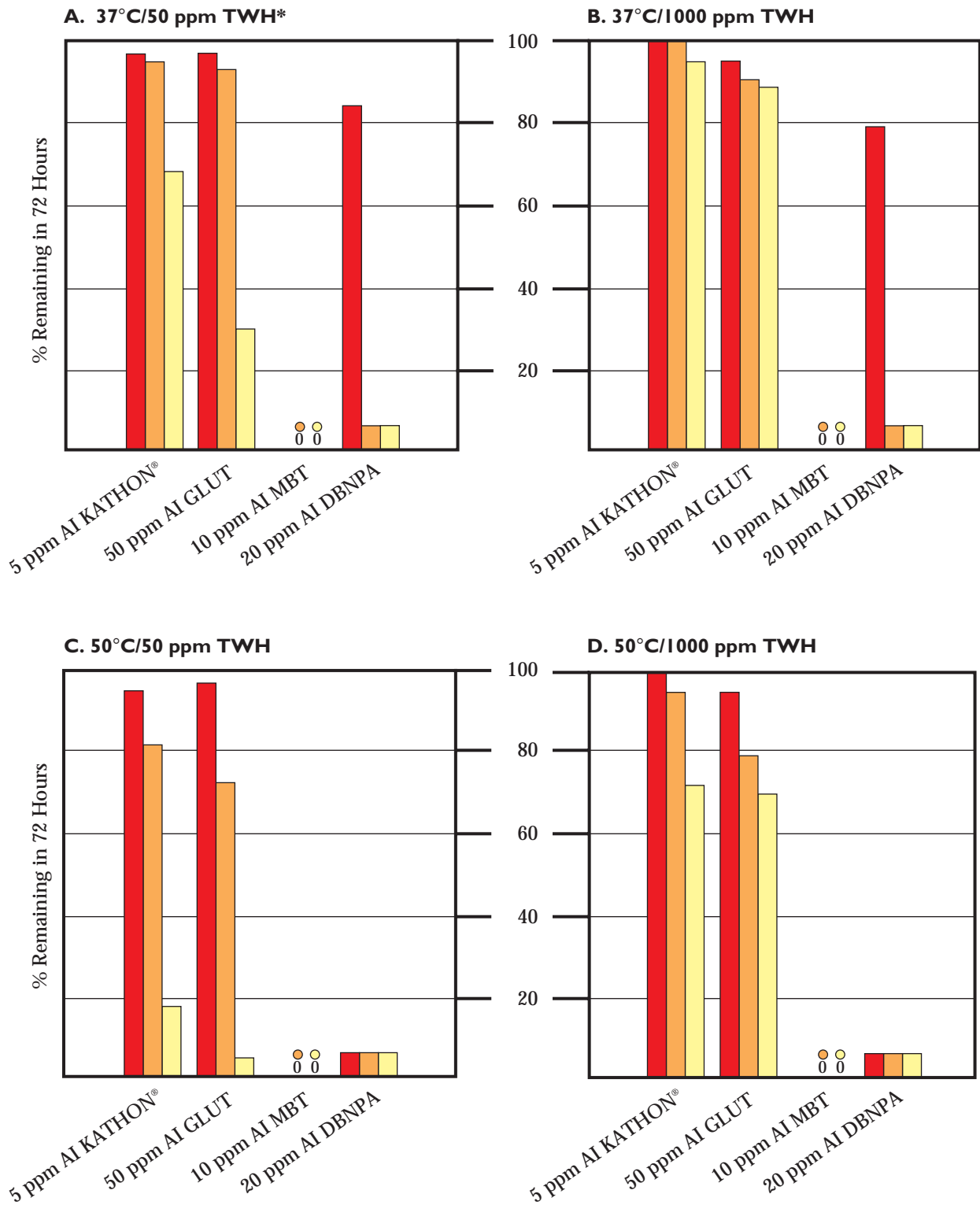
In addition to its excellent stability at use levels, KATHON® WT has the advantage that, when diluted well below its use level, it is readily biodegradable.

**Table 2 - Stability of 10 ppm active ingredient KATHON® WT in the presence of 1.0 ppm free residual chlorine**

TIME (hours)	FREE CHLORINE (ppm)	KATHON® WT (ppm AI)
0	1.0	10.0
2	1.0	10.0
4	1.0	9.7
6	1.0	9.8
69	0.1	9.1

Temperature : 27°C ; pH 7.5.

Fig. 1 : Stability of KATHON® WT vs. competitive biocides at different levels of temperature and water hardness over a pH range 5.5-9.5



\* Total Water Hardness

DBNPA = 2,2-dibromo-3-nitropropionamide

GLUT = glutaraldehyde

MBT = methylene (bis) thiocyanate (data not yet available at pH 5.5)

■ pH 5.5  
 ■ pH 7.5  
 ■ pH 9.5

## 4 - Antimicrobial properties

● **KATHON® WT is an extremely effective, broad spectrum microbicide which causes an immediate inhibition of growth on coming in contact with a microorganism.**

KATHON® WT rapidly interacts with proteins within the cell, causing an inhibition of respiration and ATP synthesis, which results in an inability to synthesize biopolymers or catabolize substrate. Growth inhibition rapidly becomes irreversible and results in cell death as essential proteins are progressively oxidized. Even before cell death occurs, the KATHON®-treated organisms are unable to synthesize either biodegradative enzymes or the exopolymers which facilitate microbial adhesion and biofilm formation.

### Minimum inhibitory concentrations

Tables 3-6 show the minimum inhibitory concentrations (MIC) of KATHON® WT active ingredient against microorganisms in test-tube and microtitre plate assays i.e. the lowest concentration which will inhibit microbial growth.

This data demonstrates broad spectrum activity against all types of fouling microorganisms e.g. fungi, bacteria, and algae. The methods used to obtain this data are useful for screening antimicrobial substances under standardized laboratory conditions, in nutrient rich growth media. Therefore the effective levels of active ingredient derived from these tests do not necessarily translate into the most efficacious use levels for particular applications.

### Antimicrobial properties of a water treatment biocide

Many water treatment biocides have "gaps" in their activity spectra i.e. they may be good fungicides but poor algicides or bactericides. One biocide which can perform the function of two or three different products, saves both time and money and reduces the chances of dosing errors. A broad spectrum biocide, such as KATHON® WT, which prevents the growth of, or kills organisms causing surface fouling, at low concentrations, is essential in industrial water treatment.

Table 3 - Minimum inhibitory concentrations of KATHON® WT vs fungi <sup>a</sup>

ORGANISM	ATCC N°	ACTIVE INGREDIENT (ppm)
* Aspergillus foetidus	16878	8
* Aspergillus niger	9642	9
* Aspergillus oryzae	10196	5
Candida albicans (yeast)	11651	5
Chaetomium globosum	6205	9
* Cladosporium resinae (Hormoconis resinae)	11274	5
Gliocladium fimbriatum	QM7638	9
Lentinus lepideus	12653	4
Gloeophyllum trabeum	11539	6
* Mucor rouxii	R and HL5-83	5
▶ * Penicillium funiculosum	9644	5
▶ * Penicillium variable (glaucum)	USDA	2
Phoma herbarum (pigmentivora)	12569	2
* Aureobasidium pullulans	9348	5
* Rhizopus stolonifer	10404	5
▶ Rhodotorula rubra (yeast)	9449	2
Saccharomyces cerevisiae (yeast)	2601	2
Trichophyton mentagrophytes (interdigitale)	9533	5

**Table 4 - Minimum inhibitory concentrations of KATHON® WT vs bacteria <sup>a</sup>**

ORGANISM	ATCC N°	ACTIVE INGREDIENT (ppm)
GRAM-NEGATIVE		
Achromobacter parvulus	4335	2
* Alcaligenes faecalis	8750	2
Azotobacter vinelandii	12837	5
* Enterobacter aerogenes	3906	5
Escherichia coli	11229	8
▶ * Flavobacterium suaveolens	958	9
▶ Nitrobacter agilis	14123	0.1
* Proteus vulgaris	8427	5
▶ * Pseudomonas aeruginosa	15442	5
▶ * Pseudomonas cepacia	Gibraltar 165	0.75
▶ * Pseudomonas fluorescens	13525	2
▶ * Pseudomonas oleoverans	8062	5
Shigella sonnei	9292	2
GRAM-POSITIVE		
▶ * Bacillus cereus var. mycoides	R and HL5	2
▶ * Bacillus subtilis	R and HB2	2
Brevibacterium ammoniagenes	6871	2
Cellulomonas sp.	21399	6
▶ Sarcina lutea	9341	5
* Staphylococcus aureus	6538	2
* Staphylococcus epidermidis	155	2
Streptomyces albus	3004	1

▶ Microorganisms causing fouling of cooling towers.

\* Microorganisms associated with slime deposits in paper-making processes.

a : The bacteriostatic and fungistatic tests were performed by serially diluting the biocide in trypticase-soy broth followed by a 1:100 inoculation with 24-hour broth cultures of test bacterium or fungal spore suspension (prepared from 7-14 day culture slants washed with 7 mls of deionized water). Minimum inhibitory concentration levels were determined visually after 2 days incubation at 37°C for bacteria and 7 days incubation at 28-30°C for fungi.



## ● **Biofilm.**

A considerable difference exists between the efficacy of a biocide against free-living or planktonic microorganisms and surface-attached or sessile microorganisms. Sessile microorganisms build up on process surfaces that are in continual contact with water, to form biofilms, which may vary from the more obvious slimy or filamentous layers, to discrete deposits barely visible to the naked eye.

Biofilms consist of complex populations of sessile microorganisms (including bacteria, fungi, protozoa and algae), inorganic and organic debris bound together by an extracellular microbial adhesive<sup>1,2</sup> (Fig. 2). The polysaccharide matrix protects microorganisms against rapid environmental changes, including the addition of many biocides and other water treatment chemicals, making them more difficult to kill than their free-living counter-parts. Some biocides may also be deactivated by adsorption to organic and/or inorganic debris within the biofilm itself.

Not only do surface-attached microorganisms outnumber planktonic populations by several orders of magnitude, but they are also the direct cause of most problems in industrial cooling water systems, air washers and paper mills. These include :

### **Energy loss due to fouling**

- increased heat transfer resistance
- filter blocking
- decreasing fluid flow/increasing pressure drop in pipes

### **Microbial-induced corrosion**

- of unprotected metal surfaces beneath the biofilm

### **Decreased manufacturing efficiency**

- breakaway biofilm interferes in paper manufacture
- increased stoppages for cleaning and maintenance of equipment

### **Failure of other water treatment chemicals**

- biodegradation of additives such as corrosion inhibitors

### **Potential health effects**

- biofilm may harbour pathogenic or potentially pathogenic organisms e.g. *Legionella* and *Pseudomonas* spp.

**Table 5 - Minimum inhibitory concentrations of KATHON® WT vs algae <sup>b</sup>**

ORGANISM	ACTIVE INGREDIENT (ppm)
CHLOROPHYTA (GREEN ALGAE)	
▶ Chlorella oleofaciens	0.12
▶ Chlorella pyrenoidosa	0.03
Scenedesmus quadricauda	1.0
Selenastrum capricornutum	0.25
▶ Ulothrix fimbriata	0.63
▶ Ulothrix acuminata	0.63

**Table 6 - Minimum inhibitory concentrations of KATHON® WT vs blue green bacteria <sup>b</sup>**

ORGANISM	ACTIVE INGREDIENT (ppm)
CYANOPHYTA/CYANOBACTERIA	
Anabaena flos-aquae	0.03
Nostoc commune	0.12
▶ Oscillatoria prolifera	0.08
Phormidium luridum	0.12
Synechococcus leopoliensis	0.50
Schizothrix calcicola	0.31
Scytonema hofmanni	0.16
Calothrix parienta	0.31
Microcystis aeruginosa	0.16

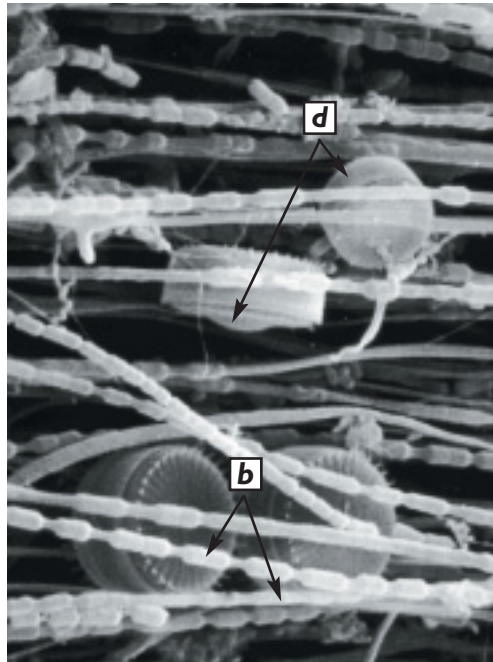
▶ Microorganisms causing fouling of cooling towers.

b : A 96-well microtitre plate assay using two-fold serial dilutions in growth media, was employed to determine MIC values against algae and blue green bacteria. Microorganisms used as inoculum were grown up on an algal-cyanobacterial medium under constant agitation and with a 16 hour illumination cycle. MICs were determined visually (using a microtitre plate reader) after 14-21 days incubation at 25°C under constant illumination.

● **The need for activity against biofilm.**

An industrial water treatment biocide must be active against biofilm. In spite of this, many biocides are still only tested against planktonic microorganisms

*Fig. 2 : A scanning electron micrograph of a biofilm which has built up on a metal surface in contact with flowing water. Chains of bacteria (b), and diatoms (d), can easily be distinguished within the biofilm.*



(see Cooling Water Microbicide section). Rohm and Haas have been at the forefront of research into sessile testing\* and have independently developed and tested two laboratory methods for monitoring the use of biocides to control biofouling in industrial water distribution systems, namely :

- model cooling towers
- circulating biofilm loops

KATHON® WT is not only effective in killing microorganisms in existing biofilms, but will also prevent biofilm regrowth when regularly dosed into a clean system.

KATHON® WT is one of the few microbicides extensively tested against biofilm organisms during its development.

A more comprehensive discussion of biofouling, the problems it causes and the efficacy of KATHON® WT against biofilms, are given in the Cooling Water and Paper Mill Microbicide sections.

*\* See External Rohm and Haas Publications list at the end of this bulletin.*

## 5 - Comparative efficacy

● **Field and laboratory evaluation.**

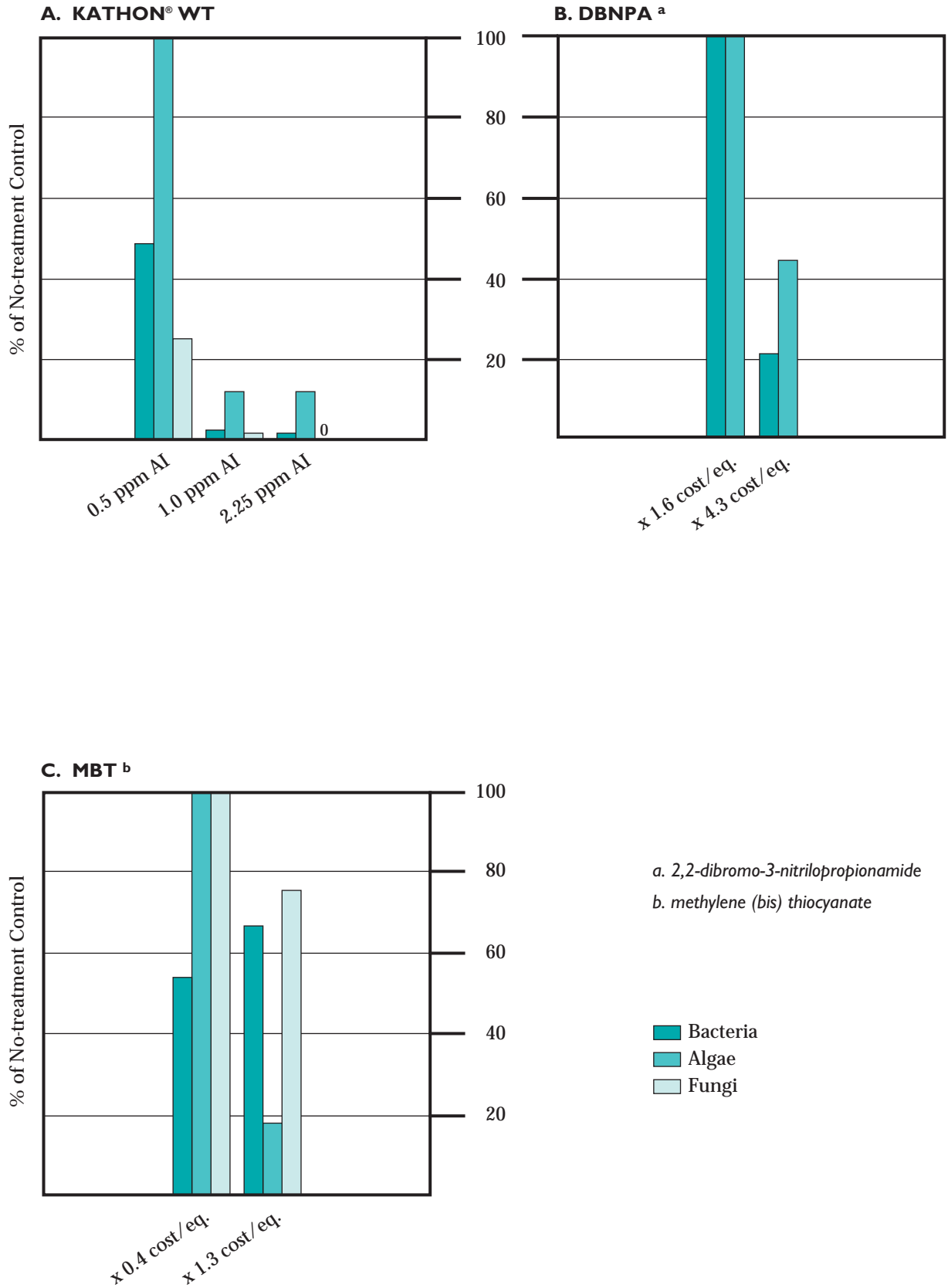
KATHON® WT has been evaluated against competitive biocides in extensive laboratory tests and field trials. Results show that it easily out-performs its nearest competitors (Fig. 3).

It produces excellent control against sessile aerobic and anaerobic microorganisms, in both industrial cooling systems (Fig. 4 and Table 7) and as a paper mill slimicide (Fig. 5). Field trials in an industrial air washer have also proved its excellence as a microbicide (Table 8).

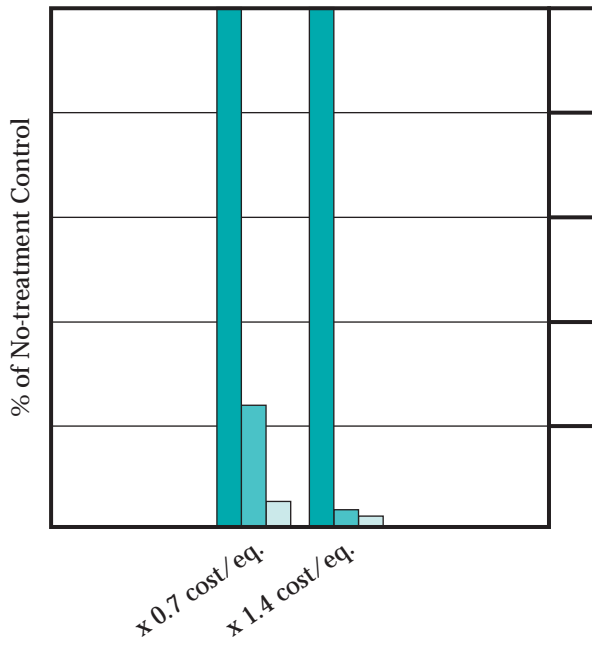
It is effective over a wide pH range and is therefore ideal for use in the alkaline conditions that exist in multi-cycle cooling towers and modern paper-making.

It is attractive economically because low levels and infrequent doses can be used successfully.

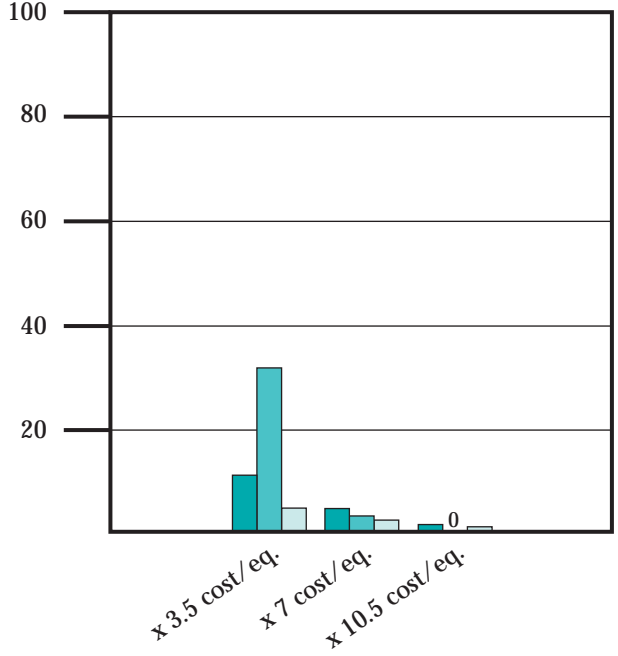
Fig. 3 : Comparative efficacy of KATHON® WT and alternative water treatment biocides against biofilm in model cooling towers (viable cells per sq cm). The approximate cost of alternative biocide treatment have been calculated in comparison with that of 1 ppm AI KATHON® WT and are expressed as cost-equivalents



**D. TBTO <sup>c</sup> / Quat**



**E. BNPD <sup>d,e</sup>**



*c. tributyl tin oxide*

*d. 2-bromo-2-nitropropane-1,3-diol*

*e. bacteria and fungi c.f.u./cm<sup>2</sup> ;  
algae mg chlorophyll/cm<sup>2</sup>*

■ Bacteria  
■ Algae  
■ Fungi

**F. Glutaraldehyde**

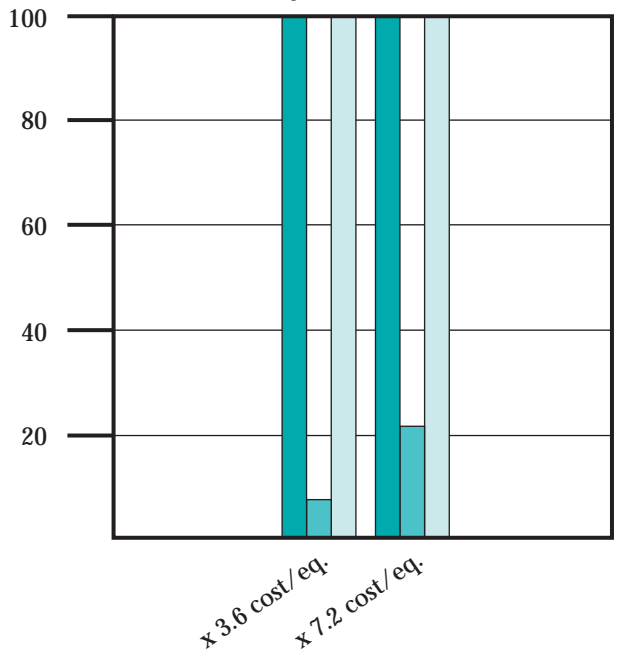


Fig. 4 : Effect of KATHON® WT on naturally occurring microbial populations in an industrial cooling tower

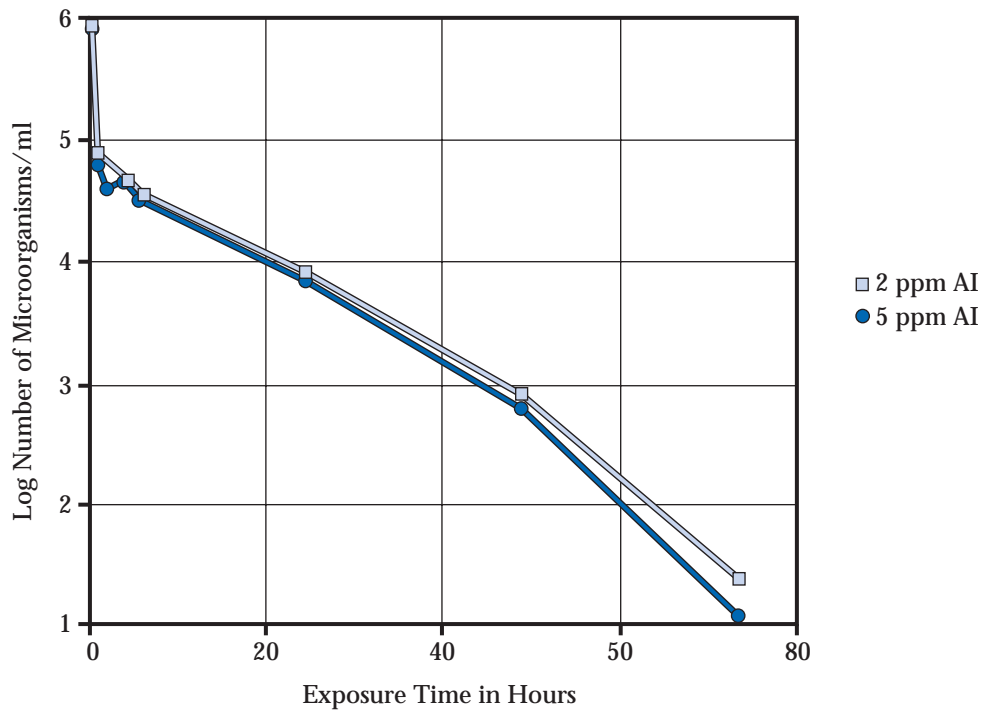


Table 7 - Effect of KATHON® WT on microbial populations in an industrial cooling tower

AREA SAMPLED	MICROORGANISM	INITIAL COUNT	% REDUCTION <sup>a</sup> AFTER :		
			3 Weeks Dose 9 ppm AI	5 Weeks Dose 1 ppm AI	5 Weeks Dose 0.5 ppm AI
Basin Water	Bacteria	1.30 x 10 <sup>6</sup> /ml	75	53	86
	Fungi	2.80 x 10 <sup>2</sup> /ml	94	93	91
	Algae	3.93 x 10 <sup>2</sup> /ml	96	88	-
Slats	Bacteria	2.79 x 10 <sup>9</sup> /cm <sup>2</sup>	98	97	94
	Fungi	1.64 x 10 <sup>5</sup> /cm <sup>2</sup>	99.5	94	99.2
	Algae	3.44 x 10 <sup>5</sup> /cm <sup>2</sup>	-	88	96
Distribution Boxes	Bacteria	4.58 x 10 <sup>10</sup> /cm <sup>2</sup>	99.9	97	95
	Fungi	4.19 x 10 <sup>4</sup> /cm <sup>2</sup>	99.4	93	93
	Algae	2.06 x 10 <sup>7</sup> /cm <sup>2</sup>	> 99.99	92	99.98

a : % Reduction based on initial count.

Fig. 5 : Comparative efficacy of KATHON® WT and carbamate in a paper mill producing newsprint

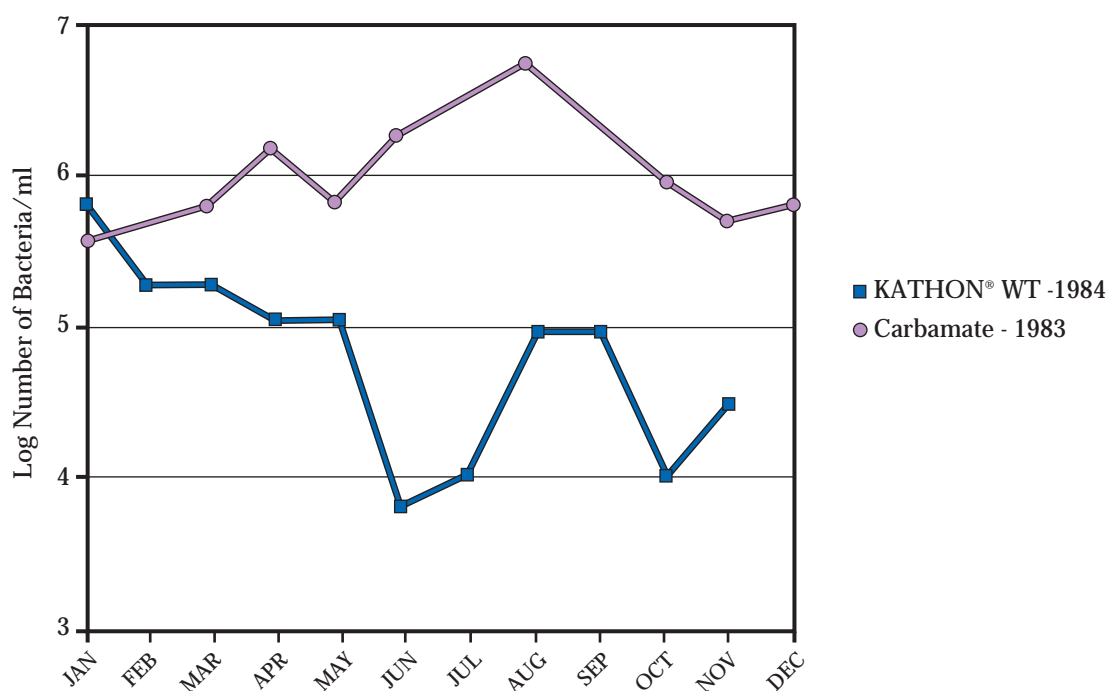


Figure 5 illustrates a case history of biocide treatment in a newsprint mill where biocide addition was at the broke towers. Using carbamate, bacterial counts in the broke pulp were

unacceptably high. After changing to a cost-equivalent level of KATHON® WT, bacterial counts in the broke were significantly reduced and downtime due to contamination was minimized.

Table 8 - Effect of KATHON® WTE on the microbial populations in an industrial air washing system <sup>a,b</sup>

	COMMON SUMP			AIR WASHERS		
	Total Count /ml	Fungi/ml	SRB/ml <sup>c</sup>	Total Count /ml	Fungi/ml	SRB/ml <sup>c</sup>
Initial Count (No KATHON® WTE)	7.5 x 10 <sup>5</sup>	70	6.3 x 10 <sup>2</sup>	1.0 x 10 <sup>6</sup>	30	7.4 x 10 <sup>2</sup>
After 1st dose						
3 hours	2.2 x 10 <sup>5</sup>	0 <sup>d</sup>	0	1.7 x 10 <sup>5</sup>	0	0
24 hours	6.0 x 10 <sup>3</sup>	0	9	1.0 x 10 <sup>3</sup>	1	0
After 2nd dose						
3 hours	9.0 x 10 <sup>3</sup>	8	80	1.2 x 10 <sup>4</sup>	0	35
24 hours	1.0 x 10 <sup>3</sup>	0	0	8.0 x 10 <sup>3</sup>	0	0
After 3rd dose						
3 hours	7.0 x 10 <sup>3</sup>	0	0	1.0 x 10 <sup>3</sup>	0	0

**a : System Parameters**

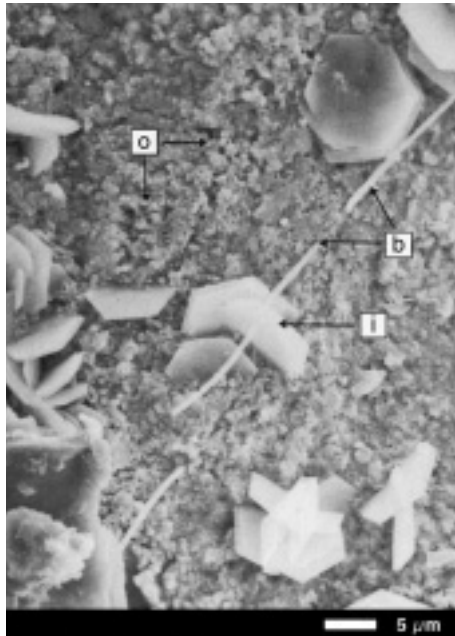
Volume of water : 945,000 litres  
 Retention time : 2.5 cycles (19 days based on blowdown)  
 pH : 7.6  
 KATHON® WTE level : 1.0 ppm Al  
 Dose schedule : Initial dose : 60.5 litres KATHON® WTE charged into common sump (60 ppm as supplied)  
 Subsequent doses : 7.5 litres KATHON® WTE 1.5% charged into common sump based on blowdown

**b : Visual Evaluation**

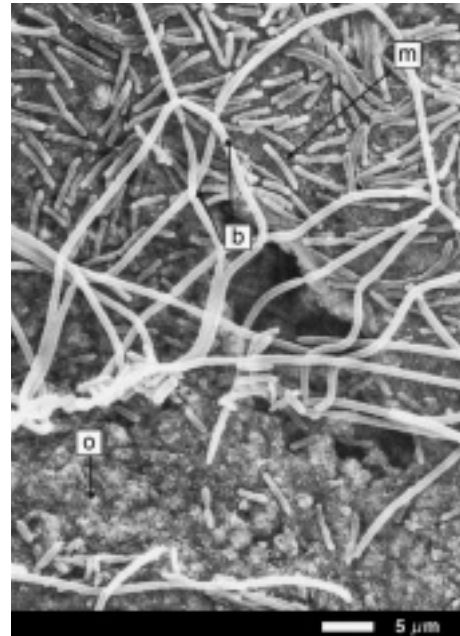
KATHON® WTE maintained a clean system. No problems of odour or foaming were encountered during or after the trial

**c** : Most probable number of sulphate reducing bacteria/ml  
**d** : 0 = none detected

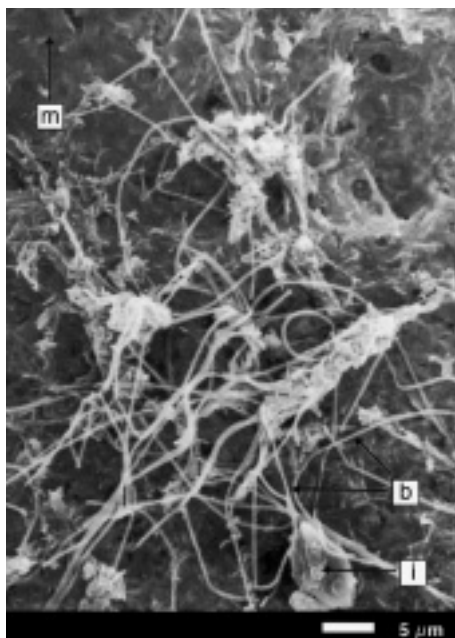
**Fig. 6 : Scanning electron micrographs of biofilm development on a metal surface**



**A**



**B**



**C**

a : Scanning electron micrographs taken of a metal surface that has been subjected to circulating water for 1 hour (A), 24 hours (B) and 64 hours (C). This sequence of micrographs shows the initial formation of a coating of organic debris and inorganic particles, followed by the attachment of bacteria, which eventually become embedded in a thick coating of extracellular microbial adhesive or "slime."

b : bacteria

i : inorganic debris

o : organic debris

m : polysaccharide matrix (slime)



## 6 - Application areas

● **KATHON® WT is ideally suited to meet the requirements of an industrial water treatment biocide.**



KATHON® WT microbicide is not deactivated by suspended organic matter, and is compatible with other water treatment additives, including chlorine. With the recent change of many cooling towers and paper mills to alkaline operating conditions, it is important to use a biocide such as

KATHON® WT, which remains stable at higher pH values. KATHON® WT is of low toxicity at use levels, easily deactivated and biodegradable. In addition to all these essential properties, KATHON® WT is cost-effective.

Table 9

APPLICATIONS	MAXIMUM USE LEVEL (ppm active ingredients)
1. Industrial cooling water systems	15.0
2. Industrial air washers with efficient mist-eliminating system	15.0
3. Paper mill slimicides	15.0

### ● **Cooling tower microbicide.**

KATHON® WT is a broad spectrum biocide, active against microorganisms in the biofilm. It is cost-effective and ideally suited for use in today's alkaline, multi-cycle towers (Fig. 4). A concentration of KATHON® WT as low as 1 ppm active ingredient, single-dosed every 3-7 days (depending on blow-down rate) is often sufficient to control severe microbiological fouling.

### ● **Maximum use levels.**

These maximum use levels relate to the level of KATHON® WT active ingredients which may be constantly present in the applications described. Lower maximum use levels may be appropriate in some instances to satisfy local environmental discharge/regulatory requirements. For further information on maximum use levels, please refer to the Safety Guidelines Bulletins.



### ● **Air washer microbicide.**

KATHON® WT is very effective in controlling microbial growth in industrial air washing systems (Table 8).



### ● **Paper mill slimicide.**

KATHON® WT is a high performance paper mill slimicide with a broad spectrum of activity which can cope with the rapid changes in microbial flora that occur in different papermaking systems. It penetrates and kills microorganisms in the biofilm and is not inactivated by the high level of suspended organic solids found in paper mill water. It also provides cost-effective microbial control (Fig. 5).



## 7 - Toxicology and environmental fate

● **Rohm and Haas Company, one of the foremost specialty chemical manufacturers, takes every measure to ensure that its products are safe for both people and the environment.**

### Toxicology

In line with this policy, Rohm and Haas provide comprehensive toxicological data for KATHON® WT, which shows that it is of low toxicity at use-levels.

### Environmental fate

With the tightening of legislation governing the quality of industrial effluent, a major consideration in the choice of a biocide for industrial water

treatment is its fate in the environment. This is discussed in more detail in the section on Environmental Fate and some of the original research is published in the Journal of Agricultural and Food Chemistry, 23, 1060-1075, 1975. Reprints are available on request.

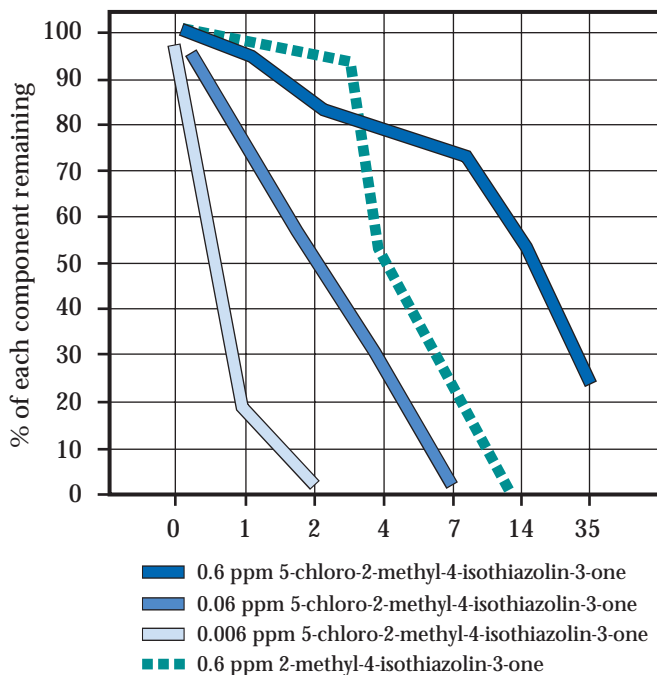
● **KATHON® WT has minimal environmental impact because of the following properties :**

- high performance product
- very low use levels
- readily biodegradable/non-persistent in the environment
- does not lead to the presence of chlorinated organics
- does not affect performance of waste water treatment plants

KATHON® WT has been shown to be environmentally acceptable by a variety of test procedures. The criteria for acceptability is beyond the most stringent control parameters introduced by regulatory authorities.

This unique combination of properties makes KATHON® WT a first choice for any water treatment programme.

Fig. 7 : Dissipation of KATHON® WT AI in river water



## 8 - Current regulatory status

● **The list below is intended to assist you and your customers to comply with prevailing regulatory controls. It illustrates the status of KATHON® WT microbicide in those countries where specific approvals are required.**

### Current regulatory status

Other grades of KATHON® microbicides based on the same active ingredients as KATHON® WT have obtained FDA or BGA approvals allowing their use as preservatives in latex which is employed in the production of adhesives and paper and board for contact with dry, aqueous and fatty foods.

For further details of those approvals, please contact your local Rohm and Haas Sales Office.

Table 10

COUNTRY	PRODUCT	REGULATORY CLEARANCE	APPLICATION	NOTES
Germany	KATHON® WT and WTE Active Ingredient (AI)	BGA Rec. XXXVI "Paper and paper board"	As slimicide in manufacture of food contact paper	As a slimicide at a maximum level of 4 ppm AI in dried fibre
Italy	KATHON® WT and WTE AI	Decree August 7, 1987 N° 395	Food contact paper	At 0.1 ppm AI max. extractable from paper
Netherlands	KATHON® WT	N° 9926 N August, 1985	Paper mill and cooling water slimicide	Not for food contact
	KATHON® WTA	N° 10034N		
Sweden	KATHON® WTE	Swedish Chemicals Inspectorate N° 3401	Paper mill slimicide	Can be used in manufacture of food contact paper
Switzerland	KATHON® WT and WTE AI	EGA Substance List N° 49466 Class III	All	
USA	KATHON® WT and WTE <sup>a</sup>	EPA 707-128 707-133	Cooling towers and air washers	Up to max. use level of 1.4 lb AI/ton dry wgt. paper
	KATHON® WT <sup>a</sup>	EPA 707-132	Paper mill slimicide	
	KATHON® WT and WTE <sup>a</sup> AI	FDA 21 CFR176.300	Paper slimicide	

a : These products have different designations in the USA.

It should be borne in mind that these clearances apply to KATHON® microbicides as submitted by Rohm and Haas Company and that formulations containing other ingredients may need to be resubmitted for approval.

## 9 - References

### ● General.

1. Characklis, W.G. and Cooksey, K.E. (1983). Biofilms and microbial fouling. *Adv. Appl. Microbiol.*, 29, 93-138.
2. Costerton, J.W., Geesey, G.G. and Cheng, K. (1978). How bacteria stick. *Sci. Am.*, 238, 86-96.

### ● External Rohm and Haas publications.

- Costerton, J.W. and Lashen, E.S. (1984). Influence of biofilm on efficacy of biocides on corrosion-causing bacteria. *Mater. Perform.* 23,13-17.
- Haack, T.K., Lashen, E.S. and Greenley, D.E. (1988). The evaluation of biocide efficacy against sessile microorganisms. In *Developments in Industrial Microbiology*, vol. 29. (J. Indust. Micro., Suppl. N° 3) pp. 247-253.
- Haack, T.K., Shaw, D.A. and Greenley, D. E. (1986). Isothiazolones preserve starch-based drilling muds. *Oil and Gas J.*, January 6th, 1986.
- Krzeminski, S.F., Brackett, C.K. and Fisher, J.D. (1975). Fate of microbicide 3-isothiazolone compounds in the environment : Modes and rates of dissipation. *J. Agric. Food Chem.*, 23, (6), 1060-1068.
- Krzeminski, S.F., Brackett, C.K., Fisher, J.D. and Spinnler, J.F. (1975). Fate of Microbicide 3-isothiazolone compounds in the environment : Products of degradation. *J. Agric. Food Chem.*, 23, (6), 1068-1075.
- McCoy, W.F. and Lashen, E.S. (1985). Biocide efficacy against sessile microorganisms in laboratory model cooling towers. *Proc. U.K. Corrosion '85*, Harrogate. 259-269.
- McCoy, W.F. and Lashen, E.S. (1986). Evaluation of industrial biocides in laboratory model cooling towers. *Proc. Ann. Meet Cooling Tower Inst.*, Paper N° TP-86-17.
- McCoy, W.F., Ridge, J.E. and Lashen, E.S. (1986). Kinetic analysis of a new delivery system for cooling towers. *Proc. 47th Annual Meeting The International Water Conference*, Pittsburg, PA.
- McCoy, W.F., Wireman, J.W. and Lashen, E.S., (1986). Efficacy of methyl-chloro/methylisothiazolone biocide against *Legionella pneumophila* in cooling tower water. *J. Indust. Micro.*, 1, 49-56.
- Ruseska, I., Robbins, J., Costerton, J.W. and Lashen, E.S. (1982). Biocide testing against corrosion-causing oil-field bacteria helps control plugging. *Oil and Gas J.*, 253-264.
- Tanner, R.S., Haack, T.K., Semet, R.F. and Greenley, D.E. (1985). A mild steel tubular flow system for biofilm monitoring. *Proc. U.K. Corrosion '85*, Harrogate. pp. 259-269.
- Williams, T.M. (1988). Growth and control of biofouling microorganisms in modified laboratory cooling towers. *Proc. 2nd Venezuelan Corrosion Conference*, Venezuelan Central University, Caracas, Venezuela.

### Acknowledgements

The electron micrograph which forms Figure 2 has been reproduced by kind permission of the Fouling Forum, Harwell Laboratories, U.K. A.E.A. The photograph on page 16 has been reproduced by kind permission of New Thames Paper Company, part of UK Paper, U.K.

*More information on the web about our products and services,  
and all our worldwide addresses :*

**www.rhcis.com**

Rohm and Haas Consumer and Industrial Specialties

KATHON® is a trademark of Rohm and Haas Company, or of its subsidiaries or affiliates. The Company's policy is to register its trademarks, where products designated thereby are marketed by the Company, its subsidiaries or affiliates.

These suggestions and data are based on information we believe to be reliable. They are offered in good faith, but without guarantee, as conditions and methods of use of our products are beyond our control. We recommend that the prospective user determine the suitability of our materials and suggestions before adopting them on a commercial scale.

Suggestions for use of our products, or the inclusion of descriptive material from patents and the citation of specific patents in this publication, should not be understood as recommending the use of our products in violation of any patent or as permission or license to use any patent of the Rohm and Haas Company.

