



# THIOCIDE™ LM1250

FUNGICIDE

## THIOCIDE™ LM1250

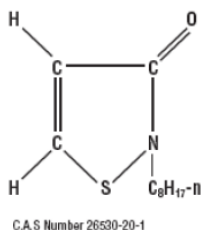
FUNGICIDE

### GENERAL DESCRIPTION

THIOCIDE® LM1250 is effective, odorless leather preservative, non-skin irritating at recommended use levels. THIOCIDE® LM1250 is water based and mixes easily with water.

THIOCIDE® LM1250 is a broad-spectrum leather preservative that can be used in wet pickled stock, wet chrome-tanned stock and wet vegetable- tanned stock.

### COMPOSITION



### PRODUCT BENEFITS

THIOCIDE® LM1250 is a broad-spectrum fungicide.

Hides and skins retain their value because THIOCIDE® LM1250 can effectively prevent damage caused by fungal growth.

THIOCIDE® LM1250 is water-soluble microemulsion type.

Rapid and high absorption onto hide or skins, which means more effective use of the biocide and less waste in the environment.

THIOCIDE® LM1250 is non-irritating and safe at recommended use levels.

### CHEMICAL AND PHYSICAL PROPERTIES

Appearance : Clear Pale yellow liquid

Odour : Mild

pH : 1 ~ 4

Specific gravity : 1.04 at 25°C

Solubility : Highly soluble in water

### DIRECTIONS FOR USE

We recommend adding THIOCIDE® LM1250 in the chrome tan solution.

The recommended levels for use are minimum 0.04% and maximum 0.15%, (typical use level 0.05% - 0.075%) based on the wet weight of the hides.

### HANDLING AND STORAGE

When personnel are required to handle THIOCIDE® LM1250 they should always wear :

#### Protective clothing

Rubber apron or impervious jacket with apron, suitable impervious full length neoprene or nitrile gloves and footwear.

#### Eye protection

Protective chemical splash goggles.

#### Hygiene

After working with THIOCIDE® LM1250 personnel should wash thoroughly with soap and water. These recommendations are especially applicable before eating, drinking or smoking.

#### Contaminated clothing

Always dispose of contaminated clothing, especially leather items.

[주]원양기업

서울시 서초구 서초3동 1534-2 명정빌딩 504 TEL : 02-525-6628 FAX : 02-525-6629  
http://www.bencide.co.kr Copyrights (주) 원양기업 2009.1.13.

These suggestions and data are based on information we believe to be reliable. They are offered in good faith, but without guarantee, as conditions and methods of use of our products are beyond our control. We recommend that the prospective user determine the suitability of our materials and suggestions before adopting them on a commercial scale.